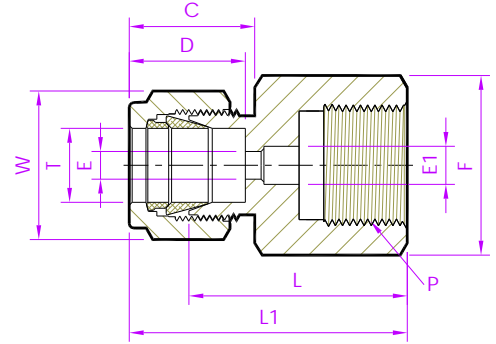


- Tube Fitting (Double Ferrule)-
Tube To Female Pipe Thread



Female Connector

Metric Tube x ISO Parallel (F) GAUGE

Tubefit Part No.	Equivalent Part No. Type 1	Equivalent Part No. Type 2	TUBE	ISO	ØE	ØE1	D	C	L	L1	Body Hex F	Nut Hex W
			OD Ø T	Female Pipe Size P								
3M - FCD - 4IPG	- 3MO - 7 - 4RG	M3GC1/4R	3	1/4	2.4	5.5	12.9	15.3	28.7	35.3	19	12
6M - FCD - 4IPG	- 6MO - 7 - 4RG	M6GC1/4R	6	1/4	4.8	5.5	15.3	17.7	30.2	37.6	19	14.2
6M - FCD - 6IPG	- 6MO - 7 - 6RG	M6GC3/8R		3/8	4.8	6.5			30.2	37.6	24	
6M - FCD - 8IPG	- 6MO - 7 - 8RG	M6GC1/2R		1/2	4.8	7.0			35.9	43.5	27	
8M - FCD - 4IPG	- 8MO - 7 - 4RG	M8GC1/4R	8	1/4	5.5	5.5	16.2	18.6	31.0	38.5	19	16
8M - FCD - 6IPG	- 8MO - 7 - 6RG	M8GC3/8R		3/8	6.5	6.5			28.7	36.2	24	
8M - FCD - 8IPG	- 8MO - 7 - 8RG	M8GC1/2R		1/2	7.0	7.0			33.5	41.0	27	
10M - FCD - 4IPG	- 10MO - 7 - 4RG	M10GC1/4R	10	1/4	5.5	5.5	17.2	19.5	31.8	39.4	19	19
10M - FCD - 6IPG	- 10MO - 7 - 6RG	M10GC3/8R		3/8	6.5	6.5			31.2	38.8	24	
10M - FCD - 8IPG	- 10MO - 7 - 8RG	M10GC1/2R		1/2	7.0	7.0			34.5	42.1	27	
12M - FCD - 4IPG	- 12MO - 7 - 4RG	M12GC1/4R	12	1/4	5.5	5.5	22.8	22.0	31.8	41.9	22	22.2
12M - FCD - 6IPG	- 12MO - 7 - 6RG	M12GC3/8R		3/8	6.5	6.5			34.3	44.4	24	
12M - FCD - 8IPG	- 12MO - 7 - 8RG	M12GC1/2R		1/2	7.0	7.0			38.1	48.2	27	
20M - FCD - 8IPG	- 20MO - 7 - 8RG	-----	20	1/2	7.0	7.0	26.0	22.0	44.2	54.3	30	32
22M - FCD - 8IPG	- 22MO - 7 - 8RG	-----	22	1/2	7.0	7.0	26.0	22.0	44.2	54.3	30	32

- No seal is made around the male thread. Instead, a gasket is dropped into the flat bottom in the female thread, and the end of the male threaded end exerts a load on the gasket to seal.(Use RGGD Fitting Gasket)

NOTE: 1)The E Dimension is the minimum opening. 2)Dimension L1, C, D is shown in the finger-tight position.
3)Dimensions are for reference only and are subject to change 4)ISO Parallel (BSPP) thread as per BS 2779.

- ALL PART NUMBERS ARE PROPRIETARY OF THEIR RESPECTIVE OWNERS. -